



SOCIAL IMPACT INCENTIVES (SIINC) FACT SHEET VILLAGE INFRASTRUCTURE ANGELS



VILLAGE INFRASTRUCTURE ANGELS (VIA)

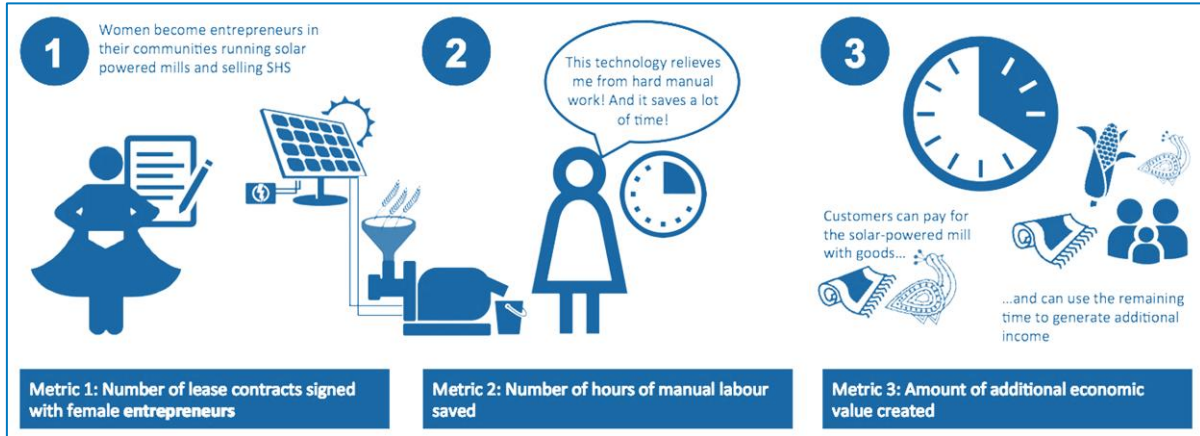
Village Infrastructure Angels (VIA) provides solar home systems (SHS) and solar-powered agro-processing community mills run by women entrepreneurs in remote regions of Honduras. Despite the improvement in recent years, the country's access to electricity varies greatly - from over 98% in major city centers to less than 25% in the most rural departments. Moreover, women in rural areas spend significant time processing the crops, a very labor-intensive activity. The benefits of the solar-powered mills will save substantial time on manual work and allow women to engage in more income generating activities. This solution, going beyond pure household lighting and phone charging, will result in higher income per family, ultimately offering a means to get out of poverty.

THE ROLE OF SOCIAL IMPACT INCENTIVES (SIINC)

SIINC payments are aimed to reward and incentivize VIA to go beyond simple household electrification, contribute to women empowerment and increase household income. The results-based revenue will complement income from the villages, creating a solid business case for VIA to attract investors. It will also pioneer more impactful solar-based solutions for poor communities.

THE METRICS - WHAT SIINC IS PAYING FOR

The SIINC mechanism is based on three carefully designed metrics that were co-created with VIA. SIINC payments are aimed to incentivize VIA to set-up community-based businesses run by women. The project delivers access to microfinance loans in remote regions where such credit was never available. The use of the agro-processing mills will relieve women from manual labor and they can use that time on income generating activities, such as handicraft making. In addition to this, the beneficiaries can pay for the solar-powered mills with the goods they produce and can use the remaining time to generate additional income.



FACTS & FIGURES

Total (maximum) amount of performance based payments (SIINC):	195,000 USD
Period of ongoing performance based payments (SIINC):	4 years
Preferred follow-on scenario:	self-sustainability via economics of scale
Total amount of investment to be mobilized (debt):	318,000 USD

MORE INFORMATION ABOUT SIINC AND VIA

SIINC Case Study – “Empowering Village Infrastructure Angels to Attract Investment and Create Impact at Scale”	http://www.roots-of-impact.org/wp-content/uploads/2017/06/SIINC-Case-Studies-VIA-FINAL.pdf
Explain Video SIINC	www.roots-of-impact.org/siinc/
White Paper SIINC	http://bit.ly/2t27tla http://bit.ly/2oM8ejC
Village Infrastructure Angels	www.villageinfrastructure.org
Roots of Impact	www.roots-of-impact.org

THE SIINC LAC PROJECT IS POWERED BY:

